

To view this email as a web page, click [here](#).

Always OLIN | Alumni Newsletter

We're offering special rates on Executive Education and partial scholarships for Olin alumni who want to pursue a graduate degree.



Olin News



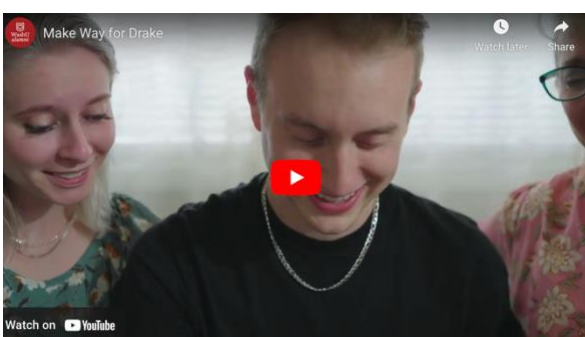
Bridging the startup funding gap

Over the course of 10 months, the Olin Brookings Commission explored why less than 3% of women, Black, and Latinx business founders receive venture capital. The commission recently presented its [findings and recommendations](#).



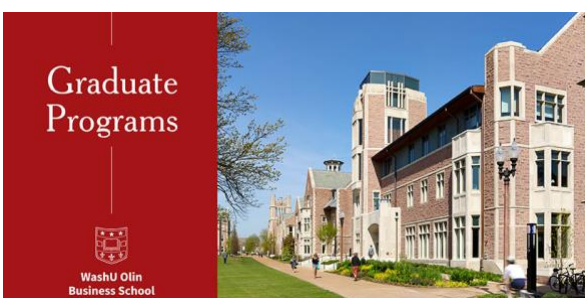
Listen to a healthcare pitch?

Olin is helping WashU's Med School with an "Innovating for Healthcare" class this summer. Med students will take an idea from concept all the way to an angel investor pitch. If you'd like to listen to the pitches and provide feedback on Wednesday, June 7, from 1 to 3 p.m. Central over Zoom, please contact Rian Edwards at rianedwards@wustl.edu.



Make Way: Our Student Initiative

Last fall, the university launched Make Way: Our Student Initiative, a fundraising effort aiming to increase access and opportunity for students at every level of need, like [Drake Shafer, BSBA 2023](#).



Partial scholarships available

As an Olin alum, you're eligible to receive a partial scholarship toward tuition on our graduate programs. We offer 11 graduate programs in various formats—full time and part time, in person and online. To learn more, please contact [Olin Graduate Admissions](#).



Radhakrishnan Gopalan Memorial Scholarship

Radhakrishnan Gopalan, a beloved professor of finance at Olin, lost his battle with cancer on December 6, 2022. He was 50. Find out how you can [support a scholarship in his name](#).

Executive Education



Executive Education: Resolving and Transforming Workplace Conflict

In this virtual course, you'll acquire skills for resolving disruptive conflicts and transforming them into productive action. This course costs \$2,985. [See this video](#). More information and [registration details are here](#).

Executive Education



Executive Education discount

We're offering Olin alumni a special rate of 50% off any Executive Education course in our catalog. [Check out our courses here](#). To receive your discount, email us the course you would like to take, your degree and graduate year at ExecEd@wustl.edu. Discounted seats are limited and subject to availability.



Lifelong Learning

Lifelong Learning



WashU Olin Business School

Featured content for May

What does it take to make a major shift mid-career? What strategies should you use, and what factors should you consider? Olin alumni share the strategies they used to change careers successfully in "Career 2.0: Insights from Alumni Who Have Successfully Switched Careers."

[Log in](#)

To access Lifelong Learning at Olin, visit [learn.WashU.online](https://learn.washu.online) and log in using your WUSTL key.

Need help accessing your WUSTL key? Visit
the help page on [learn.WashU.online](https://learn.washu.edu).



Events

13–15
MAY

“WashU Reunion 2023 50th–75th Reunions”

14
MAY

“Olin Undergraduate Graduation”

15
MAY

“Olin Graduate Programs Graduation”

15
MAY

“WU Commencement”

24
MAY

“Power Lunch & Learn:
The Definitive LinkedIn Bootcamp”

22
JUNE

“Alumni Happy Hour: Chicago”

28
JUNE

“Alumni Happy Hour: St. Louis”

[Find regional events in your area](#)

Know someone who would be ideal for one of Olin Business School’s programs? [Click here to refer a candidate](#) so we can follow up. Or if you’re interested in continuing your business education, [let us know](#).

[Refer a Candidate](#)

[Thoughts, comments, questions? Email Olin.](#)



Washington University in St. Louis

OLIN BUSINESS SCHOOL

One Brookings Drive, Campus Box 1156
St. Louis, MO 63130, US
Phone: [314-935-5226](tel:314-935-5226)
olin.wustl.edu

[Privacy Policy](#)

[Manage Subscriptions](#)