

# Olin Business eNews

Hello from WashU Olin! Our summer edition of Olin Business e-News includes updates on school strategy, highlights from faculty research and some timely alumni profiles.

Thoughts, comments, questions? [Email Olin](#).

## Olin News



**Delivering on diversity**  
Two [new appointments](#) at WashU Olin speak to the priority we're putting on diversity and inclusion efforts at the school.



**Putting everything into the job**  
After nearly a dozen years of driving entrepreneurship education, [Cliff Holekamp has retired](#), confident he's put the school on the right path in the discipline.

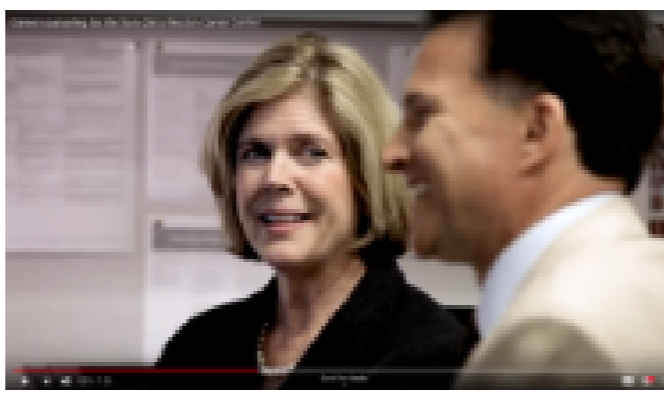


**Faculty hiring strategy**  
Research remains a paramount priority for WashU Olin and our faculty. That's why we're [making subtle changes](#) in our faculty hiring strategy.



**Faculty move for family business**  
Spencer Burke, who for two years has led the school's family business program, has [been appointed an executive in residence](#) at the newly established Koch Center for Family Business.

## Always Olin

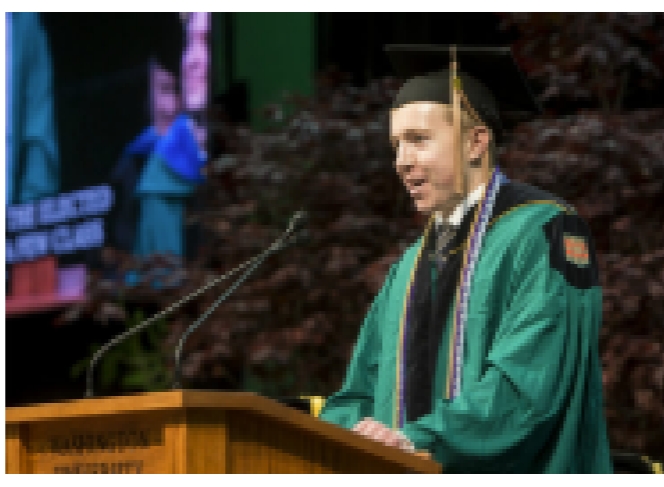


**Lifelong career coaching for alums**  
WashU Olin's Anne Petersen, from the Weston Career Center, gives an overview of the available resources for students and alumni—resources available as students graduate and forever. [Check out the short video](#).

Know a quality candidate like yourself? Or are you looking for the next step in your career? The next intake for the Executive MBA or Professional MBA program is underway now. [Refer a candidate](#).

[Refer a Candidate](#)

## Alumni News



**"Failure is not permanent"**  
Olin BSBA students elected classmate Matt Savage to be their student speaker at the undergraduate graduation recognition ceremony in May. [Read how he coped with repeated failures](#) before succeeding.

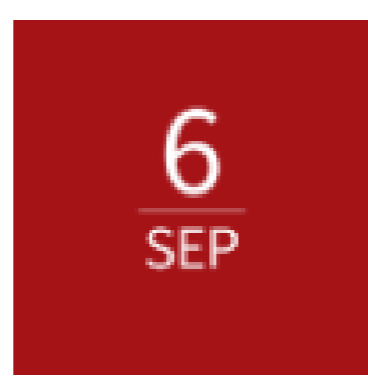


**Stanley Cup winner**  
A WashU Olin alumnus [got his dream job](#) as a data analyst with the St. Louis Blues—just in time to watch his team rise from last to best as Stanley Cup champions.

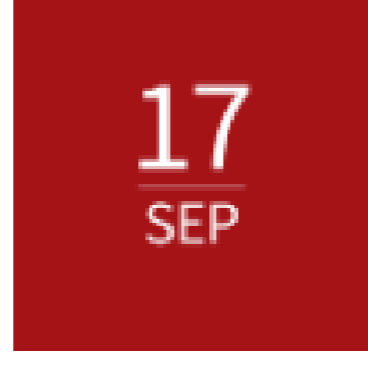


**Q&As with BSBA's**  
We got a wide selection of Olin grads on the line to answer a few questions about their time at WashU and their careers since. [Check out our gallery](#) of alumni features.

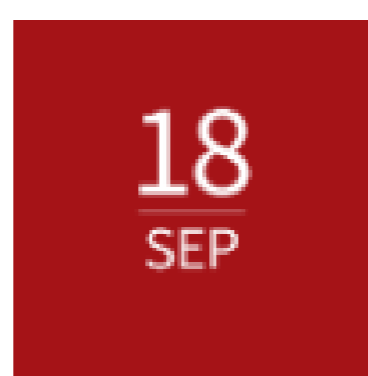
## Events



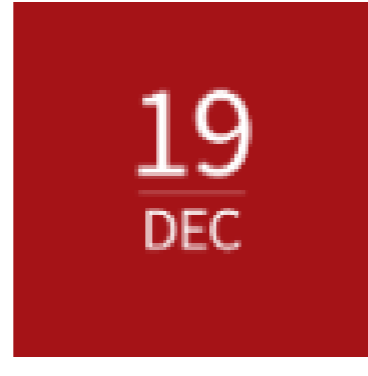
**Young Alumni Gala**  
Get over your end of summer blues and join the host committee and fellow New York alumni from the classes of 2011-2019. At Capitale on the lower east side, September 6, 9 p.m. [Details and registration here](#).



**Century Club with Mark Taylor**  
Join Olin Dean Mark P. Taylor for networking, breakfast and his presentation for Century Club members entitled "Always Olin." The program begins at 7:30 a.m. [More information and registration here](#).



**Introducing the MBA summit**  
We've reimagined our annual Meet the Firms event to help firms better connect with students and provide added-value thinking on a timely topic. Industry professionals join for an afternoon of insights on IoT, a reverse career fair, panel discussion on employer-tableting happy hour [at the new MBA Summit](#) for employers interested in recruiting Olin MBA students on September 18.



**10th Annual Brooklyn Winery Holiday Party**  
Join the WashU New York network and the host committee at the Brooklyn Winery, owned and operated by Brian Leventhal, BSBA '05, on December 19. [Details and registration](#).

[Find regional events in your area](#)

## Research/In the News

[Machine learning reduces language barriers in global trade:](#)  
*Research from Olin's Meng Liu and Xiang Hui.*

[Crest Whitestrips and the myth of big company innovation:](#)  
*Research from Olin's Anne Marie Knott.*

[First impression affects whether investor 'sharks' bite:](#)  
*Research from Olin's Xing Huang.*

[Why Free Is Too High a Price for Facebook and Google:](#)  
*Anne Marie Knott, quoted in the Wall Street Journal.*



Washington University in St. Louis  
OLIN BUSINESS SCHOOL

One Brookings Drive Campus Box 1156  
St. Louis, MO, 63130, US  
Phone: 314.935.7301 | Toll-Free: 888.622.5115  
[olin.wustl.edu](http://olin.wustl.edu)

[Privacy Policy](#)

[Manage Subscriptions](#)