

FLOOR PLANS



Room Capacities and Floor Plans

CAPACITIES

| KNIGHT CENTER ROOM | BANQUET (8 PER TABLE) | CLASSROOM STYLE | U-SHAPE | CONFERENCE TABLE | THEATER STYLE | HOLLOW SQUARE | RECEPTION |
|--------------------------------|--------------------------|--------------------|---------|---------------------|------------------|------------------|-----------|
| Anheuser-Busch Dining Hall | 220 | 80 | n/a | n/a | 250 | n/a | 300 |
| Classroom 151 (flat classroom) | 48 | 32 | 22 | 20 | 40 | 34 | 60 |
| Classroom 211 (flat classroom) | 48 | 40 | 26 | 20 | 55 | 36 | 50 |
| Classroom 340 (flat classroom) | 80 | 60 | 32 | 30 | 100 | 52 | 120 |
| O'Donnell Lounge 201 | 48 | 24 | 20 | n/a | 36 | 28 | 80 |
| Guller Lounge 155/156 | 24 | 20 | 16 | 16 | 30 | 20 | 35 |

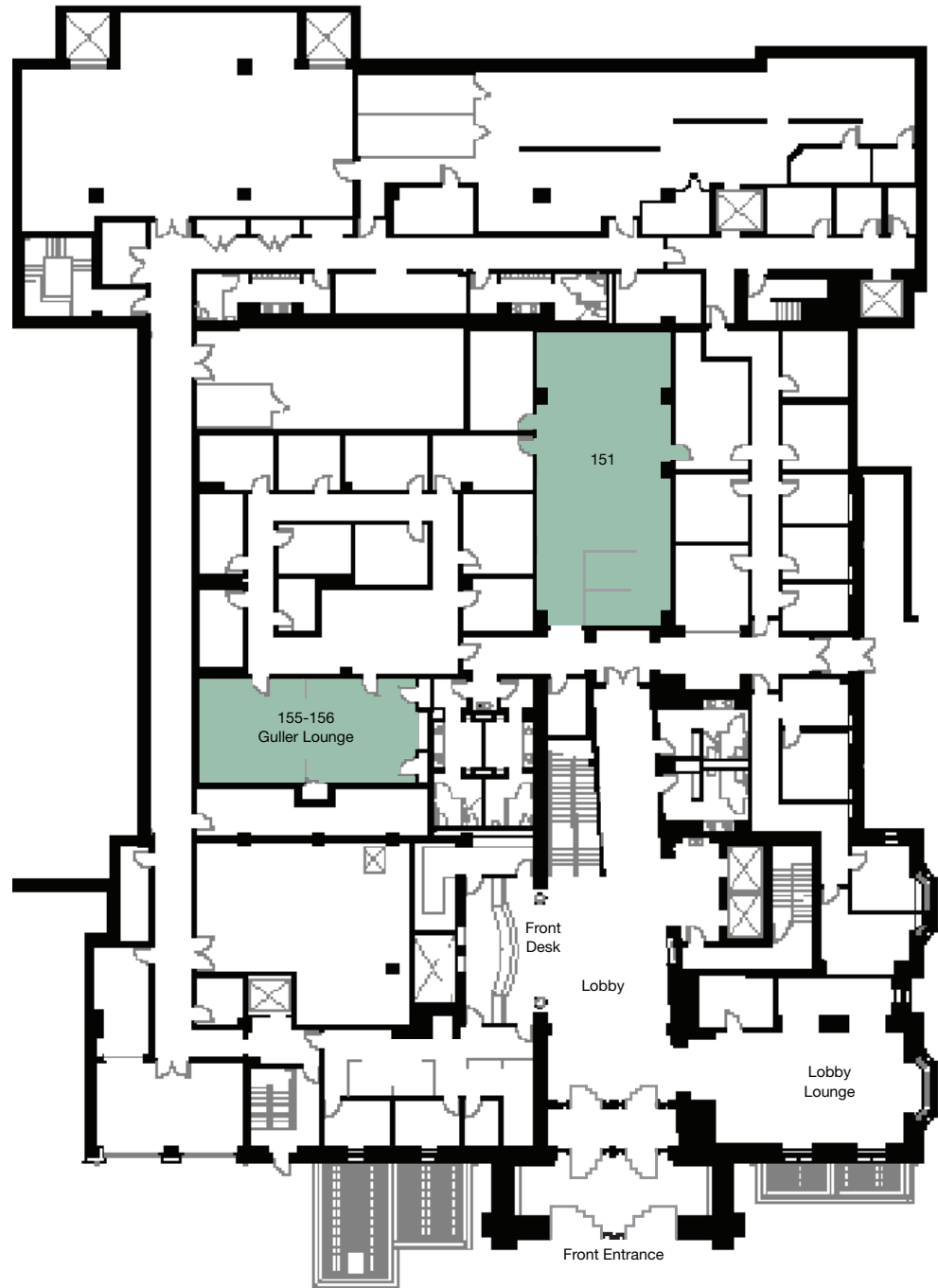
SEATING CAPACITY FOR OTHER MEETING ROOMS

| | |
|--|--------|
| Classroom 200 (large tiered classroom) | 106 |
| Classroom 210/220 (small tiered classroom) | 72 |
| Boardroom | 26 |
| Small Conference Room | 6 to 8 |
| Private Dining Room | 18 |



First Floor

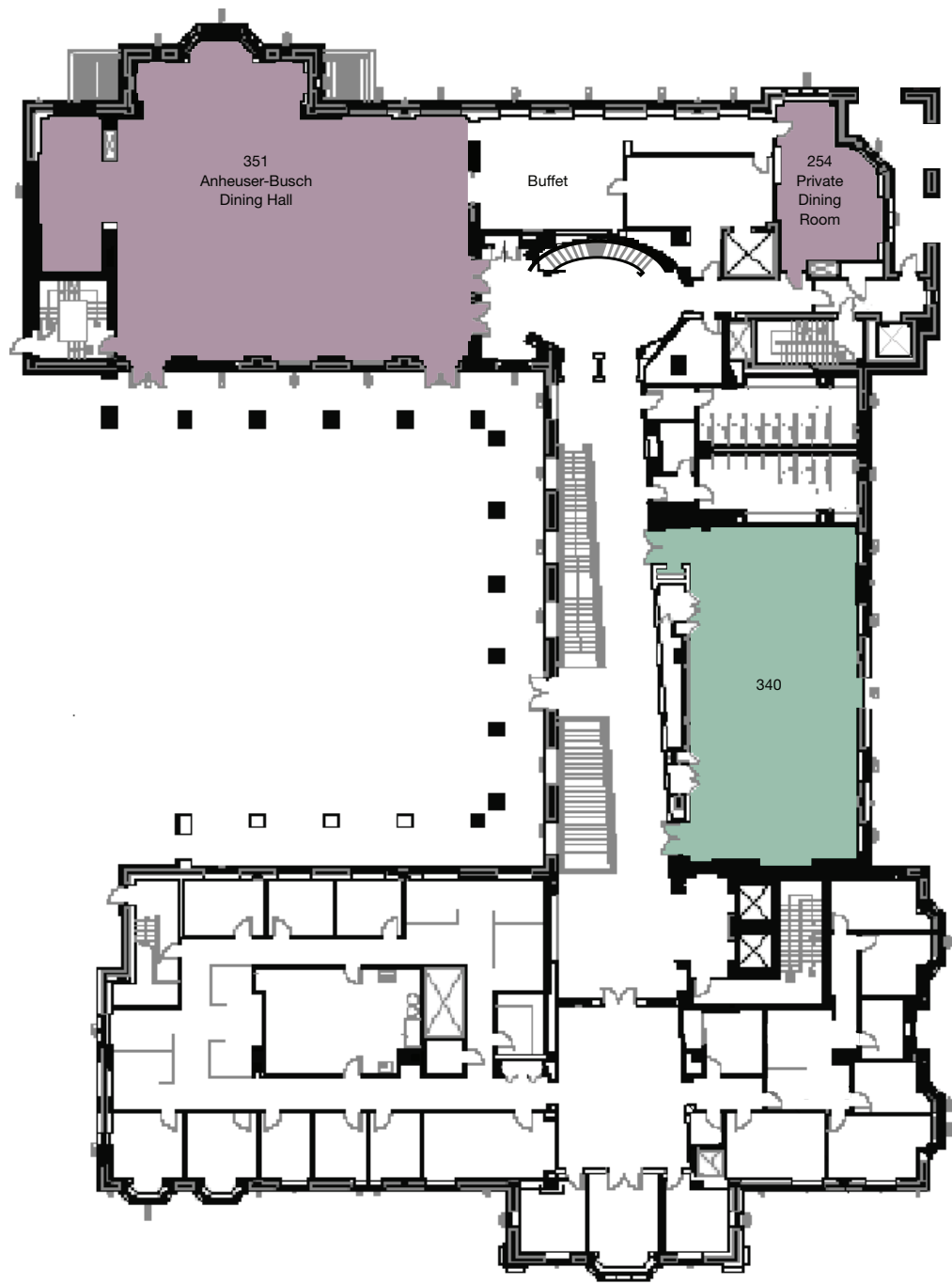
■ Flat Classroom



Second Floor

- Tiered Classroom
- Conference Room
- Flat Classroom
- Boardroom
- Dining/Lounge





Third Floor

- Flat Classroom
- Dining/Lounge



Fourth Floor

- Conference Room
- Guest Room
- Dining/Lounge





Fifth Floor

- Conference Room
- Guest Room
- Dining/Lounge